



## Sheppey Road, Dagenham

offers in excess of £385,000 Freehold

2 Receptions • Newly Decorated • New Carpets • Off Street Parking • Good Size Garden • 1st Floor Bathroom •  
New Double Glazed Window Panels • Gas Central Heating • Walking Distance To Becontree Station • CHAIN FREE



2 bed terraced house with new carpets, 2 receptions, 1st floor bathroom, double glazing, gas heating, off-street parking, garden. Near Becontree Station, schools, and shops. Ready to move in.

Council Tax band: C

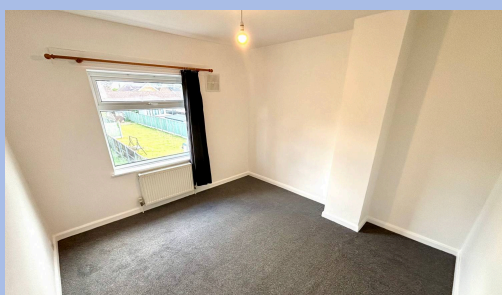
Tenure: Freehold

EPC Energy Efficiency Rating: C

EPC Environmental Impact Rating: G



- 2 Receptions
- Newly Decorated
- New Carpets
- Off Street Parking
- Good Size Garden
- 1st Floor Bathroom
- New Double Glazed Window Panels
- Gas Central Heating
- Walking Distance To Becontree Station
- CHAIN FREE



**Hall**

Fitted carpet, built in cupboard housing gas boiler, radiator, stairs to 1st floor, doors to living room, dining room and kitchen.

**Dining Room**

11' 5" x 10' 4" (3.47m x 3.15m)

into bay window. Fitted carpet, radiator, flat plastered walls and ceiling, double glazed bay window to front aspect.

**Living Room**

13' 7" x 10' 8" (4.13m x 3.25m)

Fitted carpet, flat plastered ceiling, radiator, double glazed window to rear aspect.

**Kitchen**

9' 8" x 5' 9" (2.94m x 1.74m)

Eye and base level units, granite effect work tops, space and plumbing for washing machine, fridge freezer and electric oven, ceramic tiled splash backs, laminate floor, flat plastered ceiling and walls, double glazed window and door to garden.

**Landing**

Fitted carpet, loft access, doors to bedrooms and bathroom.

**Bedroom 1**

16' 10" x 11' 0" (5.12m x 3.36m)

with 1st measurement narrowing to 3.86 m. Fitted carpet, flat plastered ceiling and walls, radiators x 2, built in cupboard, double glazed windows x 2 to front aspect.

**Bedroom 2**

11' 8" x 10' 9" (3.56m x 3.28m)

Fitted carpet, flat plastered ceiling, radiator, double glazed window to rear aspect.

**Bathroom**

6' 2" x 5' 3" (1.89m x 1.60m)

3 piece suite comprising low level w/c, wash basin in vanity unit, panel enclosed bath with mixer tap/shower attachment, ceramic tiled walls, vinyl floor, flat plastered ceiling, double glazed window to rear aspect.

You can include any text here. The text can be modified upon generating your brochure.