



Hedgemans Road, Dagenham

£1,650 pcm

Available Now • Easy Access To Heathway & Becontree Station • Newly Decorated • Double Glazing • Gas Central Heating • 1st Floor Bathroom • Good Condition



Stoneshaw

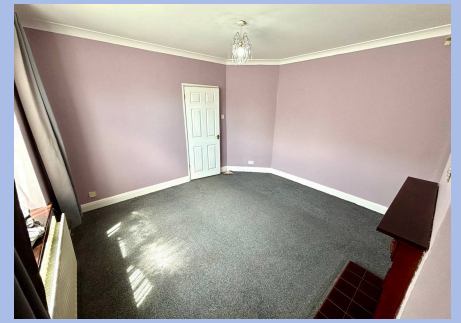
Newly decorated 2-bed terraced house with spacious living area, modern kitchen, double glazing, gas heating, near Heathway and Becontree stations, close to shops, schools, and amenities.

Council Tax band: C

Tenure: Freehold

EPC Energy Efficiency Rating: D

EPC Environmental Impact Rating: D



- Available Now
- Easy Access To Heathway & Becontree Station
- Newly Decorated
- Double Glazing
- Gas Central Heating
- 1st Floor Bathroom
- Good Condition



You can include any text here. The text can be modified upon generating your brochure.