

## Heathway, Dagenham

offers in excess of £400,000 Freehold

CHAIN FREE • Walking Distance To Heathway Station • Through Lounge/Diner • Newly Decorated • 1st Floor Bathroom • Double Glazing • Gas Central Heating • Ideal For 1st Time Buyers Or Buy To Let Investors



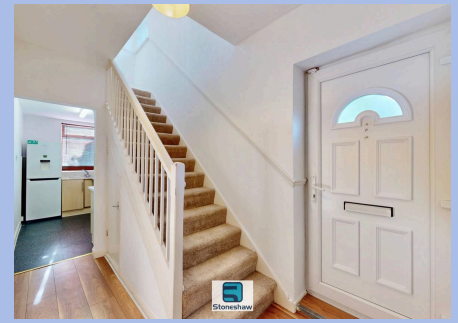
Chain free, newly decorated 3-bed end terrace near Heathway Station. Spacious lounge/diner, 1st floor bathroom, double glazing, gas central heating. Ideal for first-time buyers or investors.

Council Tax band: C

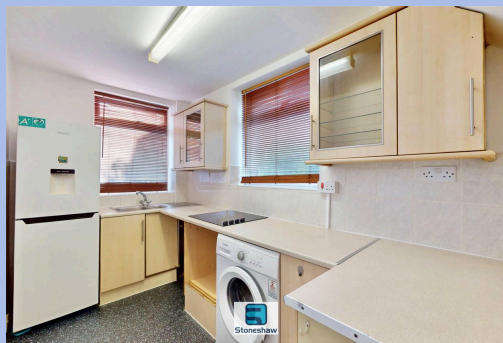
Tenure: Freehold

EPC Energy Efficiency Rating: C

EPC Environmental Impact Rating: C



- CHAIN FREE
- Walking Distance To Heathway Station
- Through Lounge/Diner
- Newly Decorated
- 1st Floor Bathroom
- Double Glazing
- Gas Central Heating
- Ideal For 1st Time Buyers Or Buy To Let Investors



**Hallway**

Via double glazed door, built in cupboard housing gas boiler, under stairs storage cupboard, stairs to 1st floor, laminate flooring, door to through lounge/diner, opening to kitchen.

**Through Lounge/Diner**

24' 10" x 10' 7" (7.56m x 3.23m)

Fitted carpet, 2 radiators, flat plastered ceiling and walls, double glazed window to front aspect, double glazed patio doors to gardens.

**Kitchen**

11' 0" x 5' 10" (3.35m x 1.78m)

Eye and base level units with marble effect work tops, space and plumbing for washing machine, fridge freezer and electric oven, ceramic tiled splash backs, flat plastered ceiling and walls, double glazed windows to side and rear aspect.

**Landing**

Fitted carpet, loft access, double glazed window to side aspect, doors to bedrooms and bathroom.

**Bedroom 1**

15' 1" x 9' 8" (4.60m x 2.95m)

Fitted carpet, radiator, flat plastered ceiling and walls, double glazed window to front aspect.

**Bedroom 2**

10' 11" x 9' 6" (3.33m x 2.89m)

at maximum points. Fitted carpet, radiator, flat plastered ceiling and walls, double glazed window to rear aspect.

**Bedroom 3**

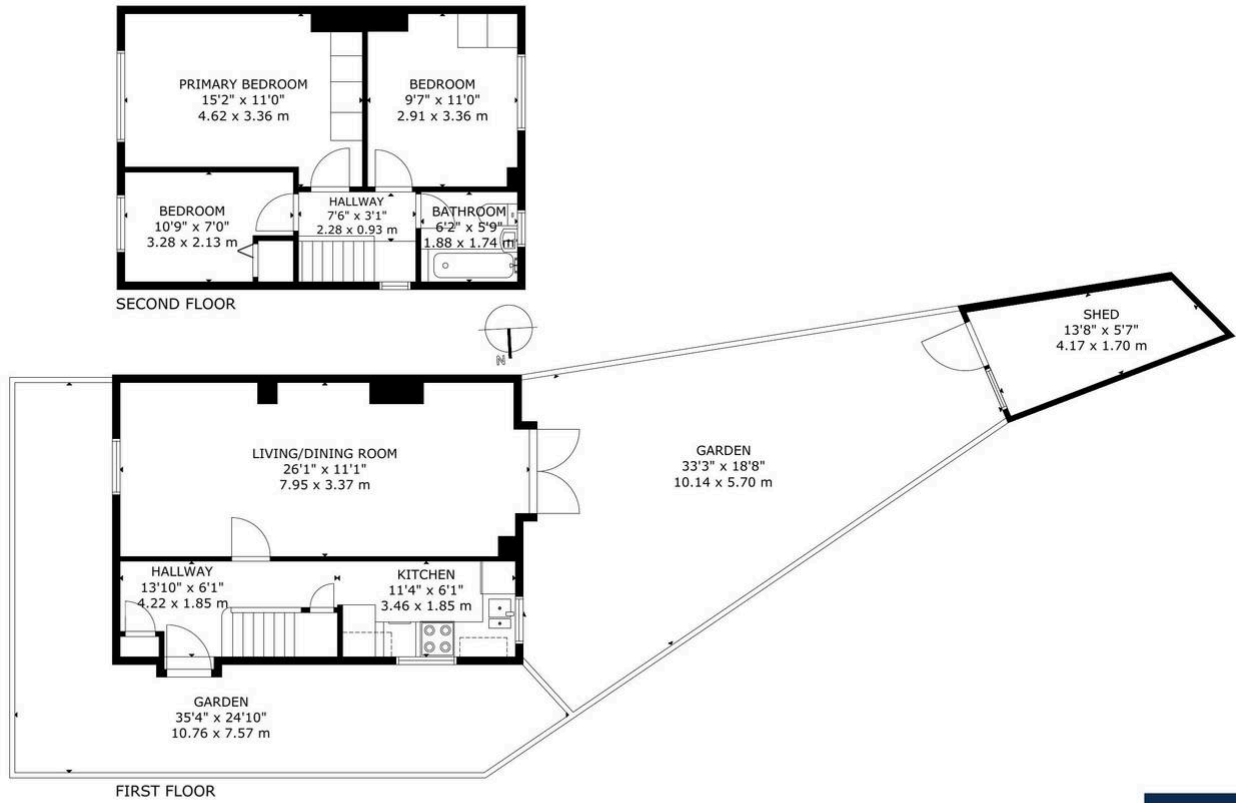
10' 8" x 7' 1" (3.25m x 2.17m)

with 1st measurement narrowing to 2.45 m. Fitted carpet, radiator, built in cupboard, flat plastered ceiling and walls, double glazed window to front aspect.

**Bathroom**

5' 11" x 5' 10" (1.80m x 1.78m)

3 piece suite comprising low level w/c, wash basin, panel enclosed bath with mixer tap/shower attachment, ceramic tiled walls and floor, radiator, flat plastered ceiling, double glazed window to rear aspect.



GROSS INTERNAL AREA  
 TOTAL: 81 m<sup>2</sup>/872 sq.ft  
 FIRST FLOOR: 40 m<sup>2</sup>/428 sq.ft, SECOND FLOOR: 41 m<sup>2</sup>/444 sq.ft  
 EXCLUDED AREAS: GARDEN: 73 m<sup>2</sup>/783 sq.ft, SHED: 7 m<sup>2</sup>/79 sq.ft  
 SIZE AND DIMENSIONS ARE APPROXIMATE, ACTUAL MAY VARY



You can include any text here. The text can be modified upon generating your brochure.