



Rivington Court, St. Mark's Place, Dagenham

£210,000 Leasehold

Top Floor (3rd) 1 Bedroom Flat • CHAIN FREE • Modern Throughout • Walking Distance To Heathway Station • Balcony With Views Over Park • Open Plan Kitchen/Living Area • Approx. 105 Year Lease Remaining • Residents Parking Space • Double Glazed • Gas Central Heating (Untested)



Stoneshaw

CHAIN FREE 1-bed flat with modern interiors by Heathway Station, balcony with park views, open plan living, 105-yr lease, parking, double glazing. Ideal for first-time buyers/investors.

Council Tax band: B

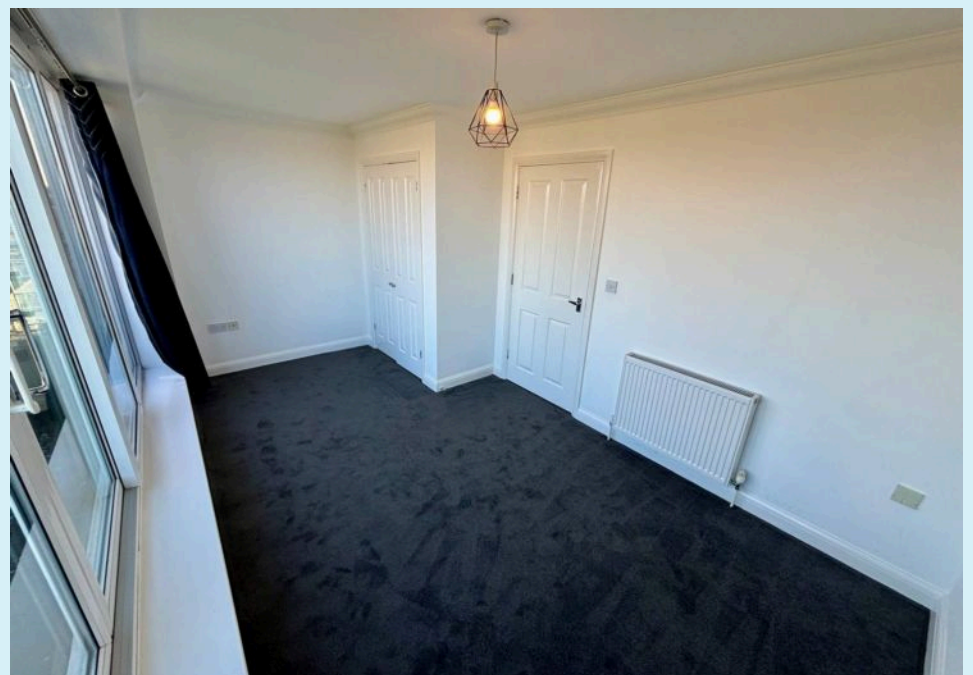
Tenure: Leasehold

EPC Energy Efficiency Rating: C

EPC Environmental Impact Rating: C



- Top Floor (3rd) 1 Bedroom Flat
- CHAIN FREE
- Modern Throughout
- Walking Distance To Heathway Station
- Balcony With Views Over Park
- Open Plan Kitchen/Living Area
- Approx. 105 Year Lease Remaining
- Residents Parking Space
- Double Glazed
- Gas Central Heating (Untested)



Hallway

at maximum point. L shaped hallway with laminate flooring, radiator, security entrance phone, built in storage cupboard housing boiler.

Open Plan Lounge/Diner/Kitchen

Lounge Area - Newley decorated flat plastered walls and ceiling, laminate flooring, radiator, double glazed UPVC sliding doors to balcony, double glazed uPVC windows to side aspect, open plan to kitchen .

Kitchen

Kitchen Area- Wall and base units with work tops, space and plumbing for washing machine and fridge freezer, gas hob with electric oven and extractor hood. 1 1/2 bowl stainless steel sink and drainer with mixer tap, ceramic white tiled splashback and laminate flooring.

Bedroom

15' 7" x 9' 1" (4.74m x 2.77m)

Flat plastered walls with new fitted carpet, radiator, double glazed UPVC sliding doors to balcony, built in wardrobe.

Bathroom

8' 2" x 6' 2" (2.49m x 1.89m)

3 piece suite comprising of low level WC, wash hand basin, panel enclosed bath with built in shower over the bath. Flat plastered ceiling with spotlights, radiator, vanity mirror, ceramic tiled splash backs, vinyl flooring.

You can include any text here. The text can be modified upon generating your brochure.